



VectorVest User Group April 2012

Written and presented by David William Paul

Dow



Dow

- I think that there is another leg up in the Dow coming shortly to 13600-14000
- My Elliott count is that the Dow is at the end or near the end of a wave 4 of a five wave sequence.

Dow



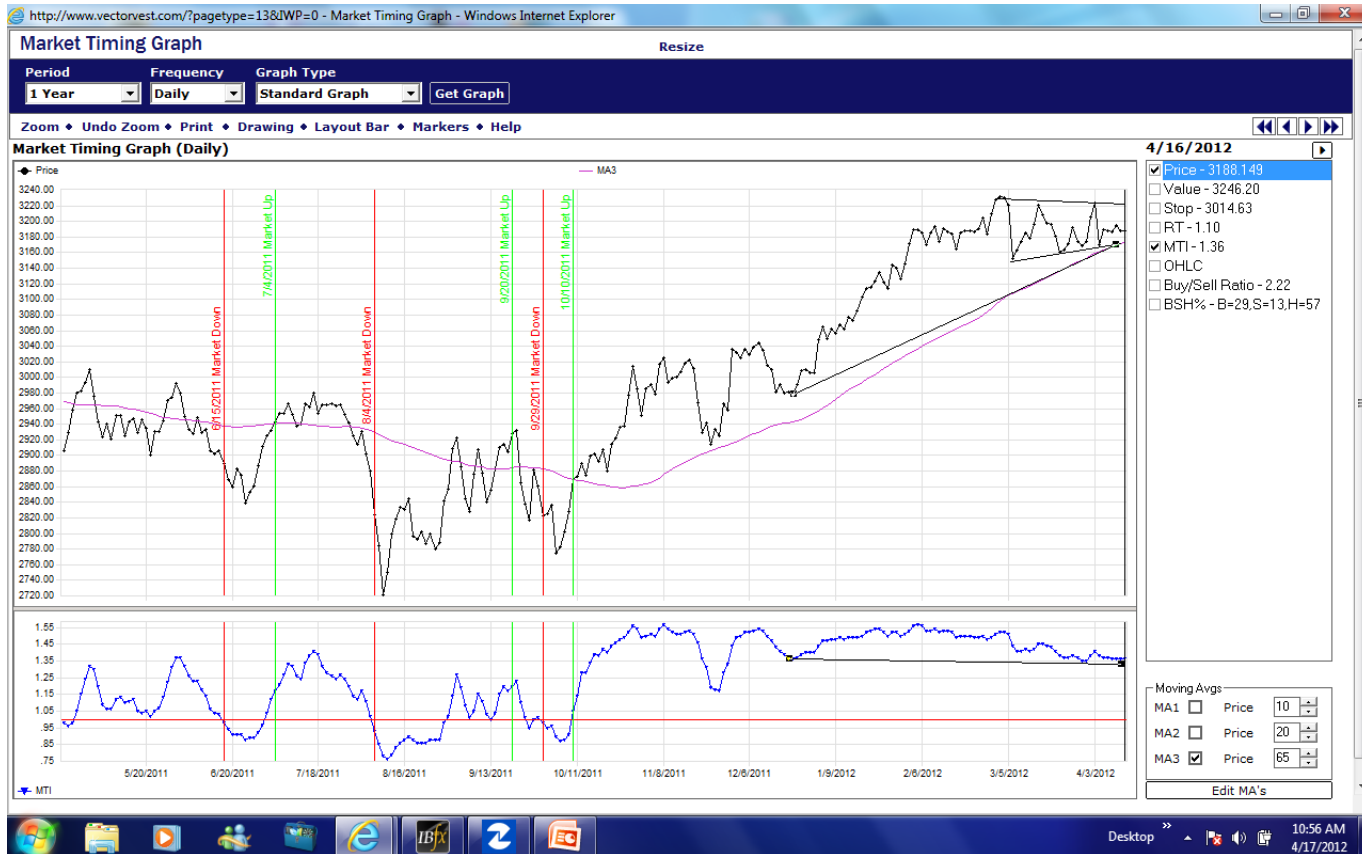
Dow



Dow



JSE VV Composite



JSE VV Composite

- The count is more difficult but the triangle being charted at the moment is typically a wave 4.
- The Long term trend is up
- The short term trend is unsettled in the range
- The Color Guard is neutral.

Gold



Gold



Gold

- I am a buyer of Gold above 1681\$
- The stop should be below the last low which is AT PRESENT 1640\$
- There is a massive wave upwards in Gold towards a blow off situation which will mark the end of the Gold bull which started in 1999.
- If you trade it start small and add to the position.

Euro\$



Euro\$



VV Front Page

Internet Explorer cannot display the webpage

VectorVest South Africa

Welcome back, Mr. paul

My Profile

VectorVest South Africa Stock Analysis and Portfolio Management System

Quick Links

Quick Lookup

Details Report Graph

VV University

Market Indices (Close)

FTSE/JSE 33661.21 -43.82

VectorVest Views

VectorVest Views

Lookup Information

Stock Viewer

Industry Viewer

Sector Viewer

Stock Details

Industry Details

Sector Details

Research & Analysis

UniSearch

Option Pricing Model

Option Rate of Return

Stock Analysis Report

Portfolio Management

Manage Portfolio

Stock WatchLists

Industry WatchLists

VectorVest South Africa Help

VectorVest South Africa Help

Improvement Requests

NEED HELP?

http://www.vectorvest.com/needhelpsa.htm

Market Analysis

Current as of Monday, 2012/04/16

The Color Guard is Neutral

VectorVest does not advocate buying stocks.

Click here for details...

VectorVest at a Glance

Updated as of 2012/04/16 for 346 stocks

Buys	Sells	Holds
102	046	198
(29.5%)	(13.3%)	(57.2%)

VVC/SA Prc: 3188.15 BSR: 2.22

VVC/SA RT: 1.10 MTI: 1.36

VectorVest Color Guard

DATE	CGPRC	CGRT	CGBR
2012/04/16	Y	Y	Y
2012/04/13	Y	Y	Y
2012/04/12	Y	Y	Y
2012/04/11	Y	Y	Y
2012/04/10	Y	Y	Y
2012/04/05	Y	Y	Y

Market Timing Indicator

From 2011/10/14 to 2012/04/16

1.49

1.38

1.27

1.16

Top Stocks, Industries and Sectors

Top VST Stocks

Stock	Value
Amalgamtd App	1.58
Metair Invstmnts	1.44
Imperial Hldgs	1.43
Woolrths Hldgs	1.43
Coronation Fund	1.42

Top RT Industries

Industry	Value
Cnsmr Dscr(Autos&Cmp)	1.51
InfTech(Smcondctrs&Eqp)	1.37
Hlthcare (Equip&Svcs)	1.28
Cnsmr Stpl(Hshld&Prsnl)	1.25
Cnsmr Dscr(ConsDrbl)	1.23

Top RT Sectors

Sector	Value
Industrials	1.19
Consumer Discretionary	1.17
Consumer Staples	1.15
Health Care	1.15
Financials	1.13

Strategy

Growing concern over Spain's deficit problem sent South African shares to a slightly lower close today. Therefore, with three yellow lights and a DnUp situation:

Prudent Investors should move to the sidelines.

Current Events

Desktop 11:27 AM 4/17/2012

VV Front page

- 1. Is the long term trend up or down
- 2. What's the short term trend?
- 3. Is the Color guard showing green lights
- 4. DETERMINING THE OVERALL MARKET TREND IS 70% of the battle.

Stock Viewer. First steps

- Although I have called this first steps, its all that is necessary to find a hit list of shares to accumulate, when the trend is UP and UP and the color Guard is firing three green lights.
- 1. Look at shares with a VST above 1.2
- 2. The criteria are simple. The price must be at least 15% below the Value figure, the Rv is above 1.3 and the Rs is above 1.3.
- 3. This can be written but I prefer to eyeball the Stock Viewer.
- 4. I have highlighted the shares that came up in this when I completed the exercise on January 4th 2012.

Stock Viewer-First Steps

Internet Explorer cannot display the webpage

VectorVest South Africa

Welcome back, Mr. paul

Viewers Graphs WatchLists Research Portfolios Views Help

My Profile

Stock Viewer

Find • Graph • History • Details • Print • Layout • Quick Test • Add To WatchList • Analysis • News •

Date: 1 / 4 / 2012 Return: 390 Return All Refresh

Sorted by: VST DESC, Symbol ASC Buys: 137 (39.9%) Sells: 33 (9.6%) Holds: 173 (50.4%) Total: 343

Company	Symbol	Exch.	Price	Change (c)	%PRC	Value	RV	RS	RT	VST	REC	Stop	GRT	EPS	EY	P/E	GPE	DIV	DY	D%
Calgro M3 Holdings Limited	CGR	JSE	325.00	+1.00	+0.31	369.90	1.45	1.01	1.90	1.53	B	262.45	34	0.35	10.74	9.31	3.66	0.00	0.00	
Metair Investments Ltd.	MTA	JSE	2025.00	+65.00	+3.32	2623.84	1.61	1.28	1.52	1.47	B	1789.89	34	2.48	12.23	8.18	4.16	65.00	3.21	
Pinnacle Technology Hldgs	PMC	JSE	1107.00	+22.00	+2.03	1482.49	1.56	1.41	1.36	1.44	B	1014.07	26	1.51	13.60	7.35	3.54	23.00	2.08	
Bell Equipment Ltd.	BEL	JSE	1680.00	+65.00	+4.02	2221.65	1.62	1.20	1.41	1.41	B	1503.27	39	2.97	17.67	5.66	6.90	0.00	0.00	
Coronation Fund Managers Ltd.	CMIL	JSE	2300.00	+20.00	+0.88	2519.77	1.54	1.43	1.28	1.41	B	2145.93	26	2.04	8.89	11.25	2.32	172.00	7.48	
EOH Holdings Limited	EOH	JSE	2762.00	-37.00	-1.32	3387.78	1.42	1.43	1.39	1.41	B	2471.20	18	2.29	8.29	12.06	1.50	48.00	1.74	
Barlworld Ltd.	BAW	JSE	8000.00	+205.00	+2.63	9432.23	1.41	1.17	1.56	1.40	B	7098.64	24	6.78	8.48	11.79	2.04	105.00	1.31	
The Foschini Group Ltd.	TFG	JSE	10565.00	-102.00	-0.96	12024.80	1.45	1.42	1.33	1.39	B	9725.43	21	7.55	7.15	13.99	1.51	350.00	3.31	
Mr. Price Group Ltd.	MPC	JSE	8250.00	+135.00	+1.66	7385.19	1.33	1.41	1.39	1.38	B	7563.87	19	4.69	5.69	17.57	1.09	252.00	3.05	
Woolworths Holdings Ltd.	WHL	JSE	3988.00	-2.00	-0.05	3916.39	1.40	1.55	1.18	1.37	H	3720.59	19	2.54	6.38	15.67	1.22	143.50	3.60	
Old Mutual Plc	OML	JSE	1742.00	-5.00	-0.29	2178.88	1.48	0.96	1.54	1.35	B	1525.65	33	2.17	12.43	8.05	4.11	44.68	2.56	
Omnia Holdings Ltd.	OMIN	JSE	8774.00	-46.00	-0.52	11903.42	1.56	1.28	1.22	1.34	B	8116.84	31	8.61	9.81	10.19	3.05	0.00	0.00	
Kumba Iron Ore Ltd.	KIO	JSE	52450.00	+550.00	+1.06	72371.81	1.51	1.07	1.40	1.33	B	48097.77	25	61.84	11.79	8.48	2.95	3450.00	6.58	
Palabora Mining Co. Ltd.	PAH	JSE	13875.00	+25.00	+0.18	18099.32	1.50	1.04	1.43	1.33	B	12312.17	27	33.11	23.86	4.19	6.45	931.00	6.71	
Remgro Ltd.	REM	JSE	12000.00	-121.00	-1.00	15662.09	1.51	1.33	1.19	1.33	B	11219.97	24	10.36	8.63	11.59	2.08	314.00	2.62	
Shoprite Holdings Ltd.	SHP	JSE	13884.00	+57.00	+0.41	8844.98	0.94	1.49	1.44	1.33	B	12372.33	8	6.11	4.40	22.73	0.36	253.00	1.82	
British American Tobacco	BTI	JSE	38700.00	+200.00	+0.52	36853.24	1.48	1.19	1.29	1.32	B	36013.03	33	24.88	6.43	15.55	2.13	1403.79	3.63	
Liberty Holdings Ltd.	LBH	JSE	8090.00	-5.00	-0.06	9807.18	1.43	1.41	1.14	1.32	H	7576.51	15	10.15	12.55	7.97	1.89	455.00	5.62	
SABMiller Plc	SAB	JSE	29137.00	+254.00	+0.88	41446.29	1.58	1.19	1.21	1.32	B	27270.49	33	16.93	5.81	17.21	1.92	655.29	2.25	
AngloGold Ashanti Ltd.	ANG	JSE	36022.00	+996.00	+2.84	54156.83	1.63	1.14	1.18	1.31	H	34308.83	38	48.70	13.52	7.40	5.14	145.00	0.40	
BHP Billiton Plc	BIL	JSE	25200.00	+325.00	+1.31	37466.28	1.63	1.09	1.22	1.31	B	23554.96	38	35.25	13.99	7.15	5.32	752.66	2.99	
JD Group Ltd.	JDG	JSE	5078.00	+100.00	+2.01	5043.80	1.16	1.14	1.53	1.31	B	4513.05	15	4.87	9.60	10.42	1.45	200.00	3.94	
SA Corporate Real Estate Fund	SAC	JSE	350.00	+3.00	+0.86	334.68	1.29	1.41	1.22	1.31	B	321.18	13	0.31	8.81	11.35	1.15	28.42	8.12	
Trans Hex Group Ltd.	TSX	JSE	340.00	+7.00	+2.10	447.96	1.44	1.34	1.18	1.31	H	322.49	20	1.01	29.71	3.37	5.95	0.00	0.00	
Anglo American Plc	AGL	JSE	31413.00	+293.00	+0.94	43917.28	1.64	1.21	1.06	1.30	B	29174.55	38	49.32	15.70	6.37	5.97	506.74	1.61	
Amalgamated Assurance Hldgs	AMA	JSE	225.00	0.00	0.00	281.10	1.44	1.03	1.40	1.30	B	200.37	26	0.36	16.12	6.20	4.20	8.00	3.56	

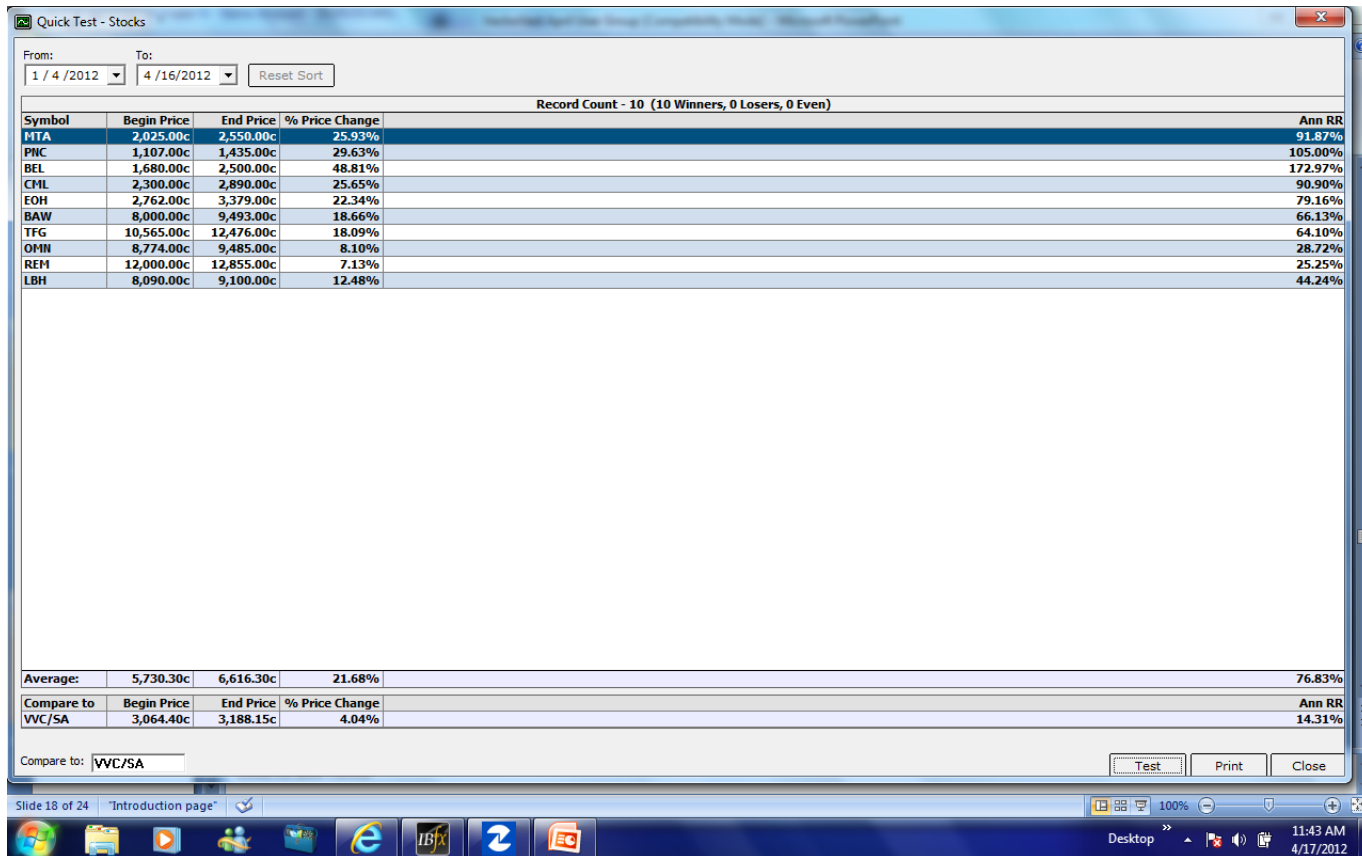
Industry	Price	Change (c)	%PRC	Value	RV	RS	RT	VST	Stop	GRT	EPS	EY	P/E	GPE	DIV	DY	DS	DG	YSG	Open	Hi
Financials(Insurance)	6592.13	-50.13	-0.75	8384.58	1.16	1.13	1.08	1.13	6260.56	19	6.89	10.45	9.57	1.99	158.75	2.40	52	8	0.90	6578.63	66

Desktop 11:39 AM 4/17/2012

Stock Viewer- First Steps

- I have chosen 10 stocks which are undervalued in the short term and have high earnings potential and a history of solid no nonsense growth.
- Split your capital into 10 pieces and buy each with that amount.
- Resolve never to lose more than 10% on any investment.
- Consider going into cash if the main trend changes.
- The next slide shows how the first 3 and ½ months have gone in a UP market.

Stock Viewer- First steps



Stock Viewer –First Steps

- 10 winners and no losers from a visual examination which is non curve fitted and non optimized.
- I have tried exactly the same procedure with the UK data base and it works with equal success.

Stock Viewer –First steps

- What are the top 10 shares today?

Stock Viewer-First Steps

Internet Explorer cannot display the webpage

VectorVest South Africa

Welcome back, Mr. paul

Viewers Graphs WatchLists Research Portfolios Views Help

My Profile

Stock Viewer

Find Graph History Details Print Layout Quick Test Add To WatchList Analysis News

Date: 1/16/2012 Return: 390 Return All Refresh

Sorted by: VST DESC, Symbol ASC

Buy: 102 (29.5%) Sell: 46 (13.3%) Hold: 198 (57.2%) Total: 346

Company	Symbol	Exch.	Price	Change (c)	%PRC	Value	RV	RS	RT	VST	REC	Stop	GRT	EPS	EY	P/E	GPE	DIV	DY	D
Amalgamated Appliance Hldgs	AMA	JSE	350.00	+6.00	+1.74	410.74	1.48	1.36	1.80	1.58	B	295.63	25	0.52	14.99	6.67	3.75	8.00	2.29	5
Metair Investments Ltd.	MTA	JSE	2550.00	0.00	0.00	3256.50	1.53	1.29	1.50	1.44	B	2258.91	28	2.86	11.20	8.93	3.14	65.00	2.55	5
Imperial Holdings Ltd.	IPL	JSE	16455.00	+186.00	+1.14	18130.06	1.35	1.48	1.43	1.43	B	14607.92	16	15.16	9.21	10.86	1.48	480.00	2.92	5
Woolworths Holdings Ltd.	WHL	JSE	4884.00	+16.00	+0.33	4627.34	1.41	1.56	1.32	1.43	B	4396.82	20	2.85	5.84	17.12	1.17	143.50	2.94	5
Coronation Fund Managers Ltd.	CML	JSE	2890.00	+20.00	+0.70	2867.37	1.46	1.45	1.37	1.42	B	2656.81	23	2.21	7.64	13.09	1.76	172.00	5.95	5
Litha Healthcare Group Ltd	LHG	JSE	347.00	+17.00	+5.15	457.93	1.53	1.29	1.43	1.42	B	314.67	29	0.30	8.57	11.67	2.49	0.00	0.00	5
Invicta Holdings Ltd.	IVT	JSE	6450.00	+20.00	+0.31	7281.30	1.41	1.42	1.38	1.40	B	5840.02	19	6.43	9.97	10.03	1.90	183.00	2.84	5
Super Group Ltd.	SPG	JSE	1445.00	+2.00	+0.14	1467.35	1.16	1.41	1.53	1.39	B	1297.63	14	1.54	10.64	9.40	1.49	0.00	0.00	5
Trencor Ltd.	TRE	JSE	4473.00	+21.00	+0.47	5965.17	1.62	1.24	1.32	1.39	B	4086.97	34	6.78	15.15	6.60	5.16	175.00	3.91	5
Ellies Holdings Ltd.	ELI	JSE	345.00	0.00	0.00	406.13	1.34	1.17	1.57	1.38	B	304.94	21	0.42	12.28	8.14	2.58	0.00	0.00	5
Pinnacle Technology Hldgs	PWC	JSE	1435.00	+10.00	+0.70	1966.56	1.55	1.39	1.23	1.38	B	1333.60	27	1.77	12.36	8.09	3.34	23.00	1.60	5
EOH Holdings Limited	EOH	JSE	3379.00	-1.00	-0.03	4346.90	1.45	1.44	1.24	1.37	B	3073.11	19	2.54	7.53	13.28	1.44	48.00	1.42	5
The Foschini Group Ltd.	TFG	JSE	12476.00	+263.00	+2.15	12698.80	1.38	1.45	1.30	1.37	B	11378.32	20	7.91	6.34	15.77	1.27	350.00	2.81	5
Barloworld Ltd.	BAW	JSE	9493.00	-57.00	-0.60	12448.52	1.53	1.38	1.21	1.36	B	8820.49	26	7.35	7.74	12.92	2.02	155.00	1.63	5
Capitec Bank Holdings Ltd.	CPI	JSE	20811.00	+211.00	+1.02	24192.43	1.45	1.28	1.32	1.35	B	18960.51	25	13.36	6.42	15.58	1.61	425.00	2.04	5
Mr. Price Group Ltd.	MPC	JSE	9716.00	-69.00	-0.71	8691.47	1.33	1.43	1.28	1.35	B	8835.76	19	5.27	5.42	18.45	1.03	252.00	2.59	5
Remgro Ltd.	REM	JSE	12855.00	-166.00	-1.27	17664.01	1.56	1.43	1.09	1.35	H	12234.68	25	14.47	11.26	8.88	2.82	314.00	2.44	5
Bell Equipment Ltd.	BEL	JSE	2500.00	0.00	0.00	3382.51	1.61	1.14	1.30	1.34	B	2278.96	39	2.96	11.83	8.45	4.62	0.00	0.00	5
Exxaro Resources Limited	EXX	JSE	21280.00	+160.00	+0.76	29021.72	1.53	1.23	1.29	1.34	B	19743.55	27	26.83	12.61	7.93	3.41	800.00	3.76	5
Life Healthcare	LHC	JSE	2550.00	-8.00	-0.31	2048.79	1.42	1.15	1.41	1.34	B	2300.12	30	1.47	5.78	17.30	1.74	85.00	3.33	5
Seardel Investment Corp. Ltd.	SER	JSE	120.00	0.00	0.00	153.11	1.55	1.14	1.35	1.34	B	104.39	35	0.18	15.11	6.62	5.29	0.00	0.00	5
Sekunjalo Investments Limited	SKJ	JSE	64.00	+1.00	+1.59	90.47	1.64	1.24	1.17	1.34	B	59.21	37	0.07	10.86	9.21	4.02	0.00	0.00	5
Brait S.A.	BAT	JSE	2165.00	+25.00	+1.17	3167.83	1.69	1.06	1.23	1.33	B	2025.42	44	3.34	15.41	6.49	6.79	74.24	3.43	5
Control Instruments Group Ltd.	CIL	JSE	55.00	+5.00	+10.00	54.98	1.10	0.97	1.71	1.33	B	47.55	20	-0.26	-47.32	-2.11	-9.46	0.00	0.00	5
Howden Africa Holdings Ltd.	HWN	JSE	2000.00	+90.00	+4.71	2587.75	1.38	1.28	1.34	1.33	B	1840.30	16	1.68	8.40	11.90	1.35	35.00	1.75	5
Omnia Holdings Ltd.	OMN	JSE	9485.00	+50.00	+0.53	12457.46	1.47	1.33	1.21	1.33	B	8874.88	23	9.81	10.34	9.67	2.38	0.00	0.00	5

Industry	Price	Change (c)	%PRC	Value	RV	RS	RT	VST	Stop	GRT	EPS	EY	P/E	GPE	DIV	DY	DS	DG	YSG	Open	Hi
Financials(Banks)	10640.00	-10.14	-0.10	8158.29	0.85	1.23	1.17	1.12	9900.13	4	8.51	7.99	12.51	0.32	322.43	3.00	56	6	0.86	10626.00	107

Desktop 11:48 AM 4/17/2012

Stock Viewer-First Steps

- Unfortunately we cannot test in the future.
- That's in VV 9 ☺))))))))))

AMA



MTA



Litha



Pinnacle



EOH



Color Guard

- In EOH and Pinnacle wait for the color guard to go green.

Barloworld



Capitec



SAB



Old Mutual



Old Mutual



Old Mutual



Cipla



Anglo



Anglo

- Anglo is massively undervalued.
- Remember our style at VV is that of Value Momentum investing. The latter is my own term.
- This means that we look for value and that the share is moving up.
- Anglo is consolidating and I think being accumulated at these levels.
- Lets just watch it and pounce when the system eventually gives a BUY signal
- The picture is exactly the same for Billiton which is shown later

Sasol



Sasol

- Sasol looks a better prospect
- Again lets wait for a turn.
- Its undervalued and we just need to wait for the share to confirm a upward signal and that the general market is still running upward.

Billiton



Goldfields



David's Growth fund

Quick Test - Stocks

From: 1 / 4 / 2012 To: 4 / 16 / 2012

Record Count - 6 (6 Winners, 0 Losers, 0 Even)

Symbol	Begin Price	End Price	% Price Change	Ann RR
PNC	1,107.00c	1,435.00c	29.63%	105.00%
CML	2,300.00c	2,890.00c	25.65%	90.90%
EOH	2,762.00c	3,379.00c	22.34%	79.16%
TFG	10,565.00c	12,476.00c	18.09%	64.10%
WHL	3,988.00c	4,884.00c	22.47%	79.62%
LBH	8,090.00c	9,100.00c	12.48%	44.24%

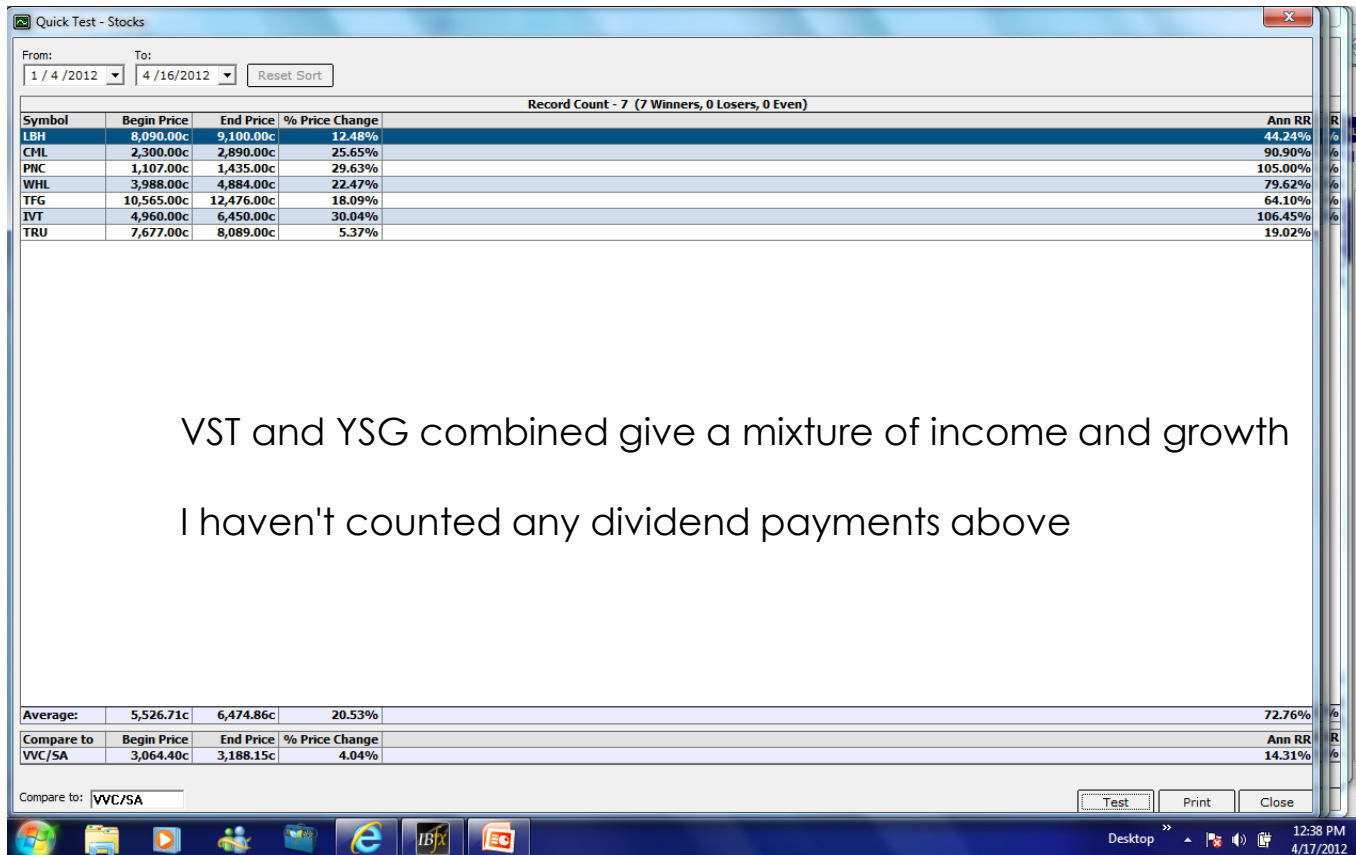
Average: 4,802.00c 5,694.00c 21.78% 77.17%

Compare to	Begin Price	End Price	% Price Change	Ann RR
VVC/SA	3,064.40c	3,188.15c	4.04%	14.31%

Compare to: VVC/SA

12:36 PM 4/17/2012

David's VST and YSG



VectorVest

- On the 26th May in Cape Town and on the June 2nd in Johannesburg David Thornton will be here from the US to help us get the best from the program.
- It's a full day with breakfast and lunch included for the token price of 49\$.
- Notes will also be supplied.